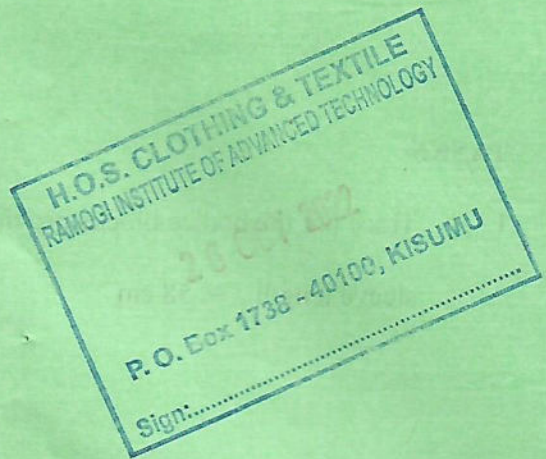


2803/104
PATTERN CONSTRUCTION I PRACTICAL
June/July 2022
Time: 4 hours



THE KENYA NATIONAL EXAMINATIONS COUNCIL
DIPLOMA IN FASHION DESIGN AND CLOTHING TECHNOLOGY

MODULE I

PATTERN CONSTRUCTION I PRACTICAL

4 hours

INSTRUCTIONS TO CANDIDATES

1. You should have the following items for this examination:

- (i) $\frac{1}{4}$ scale ruler/square;
- (ii) plain papers size A4 (photocopying type);
- (iii) 30 cm ruler;
- (iv) tape measure;
- (v) string;
- (vi) a pair of paper scissors;
- (vii) pencil (2H);
- (viii) eraser;
- (ix) tracing paper;
- (x) French curve;
- (xi) paper pins;
- (xii) glue.

2. All stages of pattern development must be clearly shown.

This paper consists of 3 printed pages.

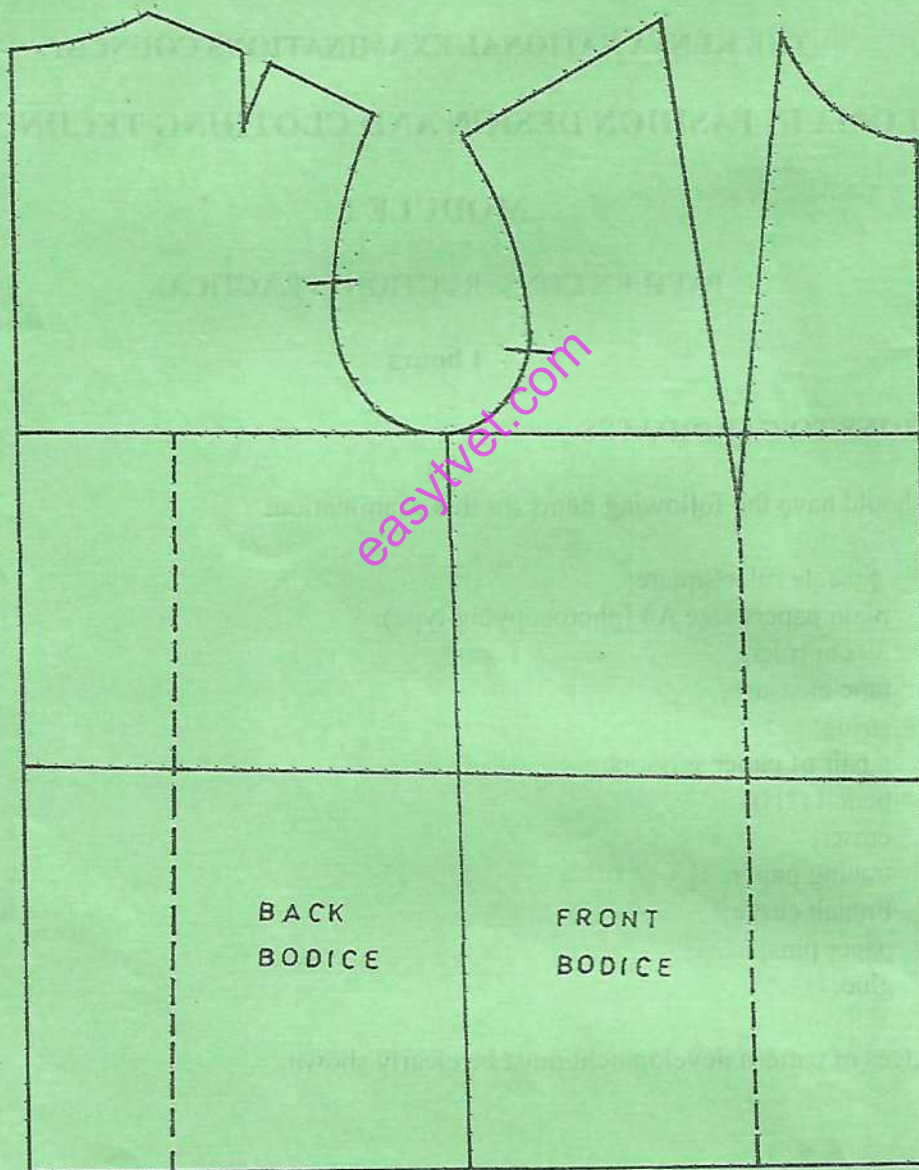
Candidates should check the question paper to ascertain that all the pages are printed as indicated and that no questions are missing.

TASKS

1. Trace out the bodice blocks provided and draft the one-piece sleeve block.

sleeve length = 58 cm

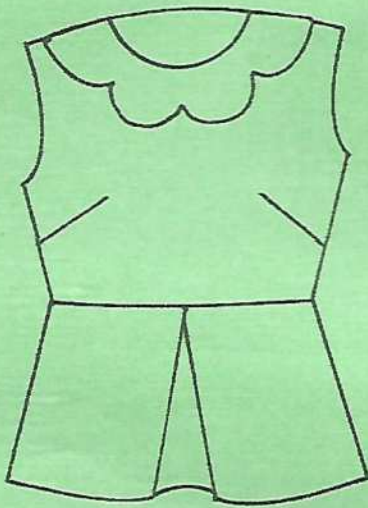
BODICE BLOCKS



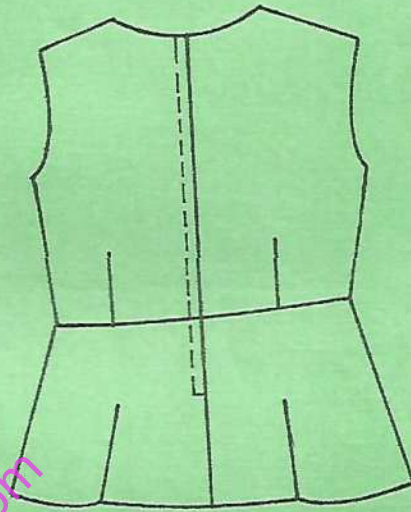
2. Trace out the bodice blocks provided and develop final patterns for the blouse style sketched below.

Collar depth = 5 cm
Pleat depth = 2 cm

2.2
4.5



FRONT VIEW



BACK VIEW

easytvet.com

THIS IS THE LAST PRINTED PAGE.